



**Water Monitoring Result at C1 - HKCEC Extension
Mid-Flood Tide**

Date	Time	Weather Condition	Sampling Depth		Water Temperature			pH			Salinity			DO Saturation		DO		Turbidity			Suspended Solids			
			m		°C		-		ppt		%		mg/L		NTU		mg/L							
					Value	Average	Value	Average	Value	Average	Value	Average	Value	Average	Value	Average	Value	Average	Value	Average				
27/2/19	12:45	Fine	Middle	3.0	20.60	20.60	20.75	7.61	7.61	7.63	32.80	32.80	32.80	106.6	107.7	107.2	7.87	7.90	7.89	1.98	1.95	1.96	<2	3.00
	12:47		Middle	3.0	20.90	20.90		7.65	7.65		32.79	32.79		107.2	107.2		7.90	7.90		1.94	1.96		3	
1/3/19	11:30	Cloudy	Middle	2.5	20.80	20.80	20.85	7.41	7.41	7.48	32.44	32.44	32.44	112.2	112.5	111.5	8.14	8.16	8.09	1.59	1.60	1.59	4	4.00
	11:32		Middle	2.5	20.90	20.90		7.55	7.55		32.43	32.43		110.8	110.6		8.03	8.01		1.60	1.58		4	
4/3/19	14:10	Cloudy	Middle	3.0	22.10	22.10	22.20	7.42	7.42	7.46	32.87	32.87	32.87	106.1	106.1	105.7	7.64	7.63	7.60	1.92	1.91	1.91	4	3.50
	14:12		Middle	3.0	22.30	22.30		7.50	7.50		32.87	32.87		105.3	105.1		7.56	7.55		1.91	1.91		3	
6/3/19	17:30	Cloudy	Middle	3.0	20.50	20.50	20.50	7.76	7.76	7.79	31.51	31.51	31.58	101.6	101.6	101.0	7.60	7.60	7.56	2.76	2.78	2.78	4	4.00
	17:32		Middle	3.0	20.50	20.50		7.82	7.82		31.50	31.80		100.4	100.5		7.51	7.51		2.79	2.79		4	
8/3/19	19:40	Cloudy	Middle	2.5	18.30	18.30	18.30	8.28	8.28	8.28	31.82	31.82	31.82	83.7	84.4	85.0	6.51	6.57	6.62	4.27	4.31	4.20	3	3.50
	19:41		Middle	2.5	18.30	18.30		8.28	8.28		31.82	31.82		85.4	86.6		6.64	6.74		4.14	4.08		4	
11/3/19	8:00	Cloudy	Middle	2.5	19.30	19.30	19.30	7.01	7.01	7.01	31.37	31.37	31.38	83.6	83.1	83.3	6.41	6.39	6.39	3.51	3.50	3.47	4	4.00
	8:02		Middle	2.5	19.30	19.30		7.01	7.01		31.38	31.38		83.2	83.1		6.37	6.37		3.44	3.44		4	
13/3/19	9:00	Fine	Middle	4.0	20.20	20.20	20.20	7.38	7.38	7.40	32.67	32.67	32.67	95.2	95.3	94.3	7.11	7.12	7.03	2.49	2.49	2.49	9	9.50
	9:02		Middle	4.0	20.20	20.20		7.41	7.41		32.67	32.67		93.5	93.1		6.94	6.95		2.48	2.48		10	
15/3/19	11:20	Cloudy	Middle	3.0	20.20	20.20	20.20	7.46	7.46	7.47	33.18	33.18	33.19	86.5	86.6	86.7	6.44	6.44	6.45	2.67	2.68	2.68	<2	<2
	11:22		Middle	3.0	20.20	20.20		7.48	7.48		33.19	33.19		86.8	86.7		6.47	6.46		2.68	2.67		<2	
18/3/19	16:00	Fine	Middle	3.0	21.50	21.50	21.55	7.41	7.41	7.43	33.63	33.63	33.63	96.4	95.7	95.3	6.99	6.93	6.90	1.80	1.80	1.81	4	4.50
	16:02		Middle	3.0	21.60	21.60		7.45	7.45		33.63	33.63		94.5	94.4		6.84	6.83		1.81	1.82		5	
20/3/19	18:10	Fine	Middle	3.0	22.60	22.60	22.60	7.86	7.86	7.87	32.59	32.59	32.57	96.4	97.4	96.3	6.91	6.96	6.89	3.46	3.47	3.48	3	2.50
	18:12		Middle	3.0	22.60	22.60		7.88	7.88		32.55	32.55		95.6	95.6		6.84	6.84		3.47	3.50		2	
22/3/19	19:14	Cloudy	Middle	3.0	24.00	24.00	24.00	8.09	8.09	8.09	30.48	30.48	30.48	83.2	83.5	82.8	5.86	5.88	5.83	6.39	6.36	6.53	6	5.50
	19:15		Middle	3.0	24.00	24.00		8.09	8.09		30.48	30.48		82.5	81.9		5.81	5.77		6.68	6.70		5	
25/3/19	8:50	Fine	Middle	3.0	20.80	20.80	20.80	7.45	7.45	7.46	33.13	33.13	33.13	91.4	91.4	91.4	6.75	6.74	6.74	4.13	4.14	4.13	8	8.00
	8:52		Middle	3.0	20.80	20.80		7.46	7.46		33.13	33.13		91.3	91.4		6.74	6.74		4.13	4.13		8	

Remarks:
Single underline denotes exceedance over Action Level.
Double underline denotes exceedance over Limit Level.



**Water Monitoring Result at RW21-P789 - GEC / CRB / SHK
Mid-Flood Tide**

Date	Time	Weather Condition	Sampling Depth	Water Temperature		pH		Salinity		DO Saturation		DO		Turbidity		Suspended Solids								
				°C		-		ppt		%		mg/L		NTU		mg/L								
				m	Value	Average	Value	Average	Value	Average	Value	Average	Value	Average	Value	Average	Value	Average						
27/2/19	12:50	Fine	Middle	4.0	20.50	20.50	20.60	7.63	7.63	7.63	32.60	32.60	32.61	112.2	111.1	110.5	8.32	8.23	8.19	1.76	1.76	1.76	4	4.50
	12:52		Middle	4.0	20.70	20.70	20.60	7.63	7.63	7.63	32.61	32.61	32.61	109.3	109.3	109.3	8.10	8.09	8.19	1.76	1.77	1.76	5	
1/3/19	15:00	Cloudy	Middle	3.5	20.90	20.90	20.90	7.88	7.88	7.90	33.11	33.11	33.12	105.5	105.5	105.7	7.75	7.75	7.77	2.21	2.21	2.22	4	3.50
	15:02		Middle	3.5	20.90	20.90	20.90	7.92	7.92	7.90	33.12	33.12	33.12	105.8	106.1	105.7	7.77	7.79	7.77	2.22	2.22	2.22	3	
4/3/19	14:30	Cloudy	Middle	3.5	21.10	21.10	21.15	7.22	7.22	7.49	32.80	32.80	32.80	104.4	104.6	103.9	7.66	7.67	7.61	2.36	2.36	2.36	3	3.00
	14:32		Middle	3.5	21.20	21.20	21.15	7.76	7.76	7.49	32.79	32.79	32.80	103.2	103.3	103.9	7.56	7.56	7.61	2.36	2.37	2.36	3	
6/3/19	18:30	Cloudy	Middle	4.0	20.40	20.40	20.40	7.87	7.87	7.88	30.89	30.89	30.89	89.8	89.4	89.6	6.75	6.72	6.73	3.62	3.61	3.64	3	3.00
	18:32		Middle	4.0	20.40	20.40	20.40	7.88	7.88	7.88	30.89	30.89	30.89	89.6	89.4	89.6	6.74	6.72	6.73	3.66	3.68	3.64	3	
8/3/19	19:00	Cloudy	Middle	3.5	18.40	18.40	18.40	8.45	8.45	8.45	31.45	31.45	31.45	90.9	91.7	91.7	7.08	7.14	7.14	3.20	3.18	3.15	2	2.00
	19:01		Middle	3.5	18.40	18.40	18.40	8.45	8.45	8.45	31.45	31.45	31.45	92.2	91.9	91.7	7.18	7.16	7.14	3.12	3.10	3.15	2	
11/3/19	8:20	Cloudy	Middle	3.5	19.30	19.30	19.25	6.99	6.99	6.99	30.92	30.92	30.93	88.3	88.2	87.4	6.49	6.78	6.65	3.17	3.25	3.19	5	5.00
	8:22		Middle	3.5	19.20	19.20	19.25	6.99	6.99	6.99	30.93	30.93	30.93	86.7	86.5	87.4	6.67	6.65	6.65	3.17	3.17	3.19	5	
13/3/19	10:15	Fine	Middle	4.0	20.20	20.20	20.25	7.42	7.42	7.43	32.64	32.64	32.64	93.0	93.0	92.2	6.94	6.94	6.88	2.68	2.68	2.68	13	12.50
	10:17		Middle	4.0	20.30	20.30	20.25	7.44	7.44	7.43	32.63	32.63	32.64	91.2	91.6	92.2	6.80	6.84	6.88	2.68	2.69	2.68	12	
15/3/19	11:30	Cloudy	Middle	4.0	20.20	20.20	20.20	7.48	7.48	7.49	33.02	33.02	33.02	91.0	90.6	89.9	6.78	6.76	6.72	2.50	2.50	2.50	<2	<2
	11:32		Middle	4.0	20.20	20.20	20.20	7.50	7.50	7.49	33.02	33.02	33.02	89.1	89.0	89.9	6.68	6.67	6.72	2.49	2.49	2.50	<2	
18/3/19	14:25	Fine	Middle	4.0	21.40	21.40	21.45	7.50	7.50	7.52	33.46	33.46	33.46	94.5	94.1	93.3	6.87	6.83	6.77	1.83	1.81	1.83	3	3.00
	14:27		Middle	4.0	21.50	21.50	21.45	7.54	7.54	7.52	33.45	33.45	33.46	92.3	92.1	93.3	6.70	6.68	6.77	1.81	1.85	1.83	3	
20/3/19	16:30	Fine	Middle	4.0	22.30	22.30	22.35	7.94	7.94	7.94	32.26	32.26	32.27	83.2	83.4	83.5	5.99	6.00	6.00	2.28	2.26	2.27	3	3.00
	16:32		Middle	4.0	22.40	22.40	22.35	7.94	7.94	7.94	32.27	32.27	32.27	83.6	83.7	83.5	6.01	6.01	6.00	2.26	2.28	2.27	3	
22/3/19	20:22	Cloudy	Middle	4.0	23.60	23.60	23.60	8.17	8.17	8.17	28.16	28.16	28.16	83.8	83.7	83.6	6.03	6.02	6.01	7.58	7.56	7.56	4	3.50
	20:23		Middle	4.0	23.60	23.60	23.60	8.17	8.17	8.17	28.16	28.16	28.16	83.7	83.0	83.6	6.02	5.97	6.01	7.55	7.53	7.56	3	
25/3/19	9:32	Fine	Middle	4.0	21.00	21.00	20.95	7.47	7.47	7.48	33.11	33.11	33.11	90.8	90.7	89.9	6.67	6.67	6.61	3.27	3.28	3.31	8	8.50
	9:34		Middle	4.0	20.90	20.90	20.95	7.48	7.48	7.48	33.11	33.11	33.11	89.2	89.0	89.9	6.55	6.55	6.61	3.34	3.34	3.31	9	

Remarks:
Single underline denotes exceedance over Action Level.
Double underline denotes exceedance over Limit Level.



**Water Monitoring Result at C1 - HKCEC
Mid-Ebb Tide**

Date	Time	Weather Condition	Sampling Depth		Water Temperature		pH			Salinity			DO Saturation		DO		Turbidity		Suspended Solids					
					°C		-			ppt			%		mg/L		NTU		mg/L					
					Value	Average	Value	Average	Value	Average	Value	Average	Value	Average	Value	Average	Value	Average	Value	Average				
27/2/19	19:25	Cloudy	Middle	3.0	20.40	20.40	20.40	8.21	8.21	8.21	31.64	31.64	31.64	92.1	92.8	92.7	6.89	6.94	6.93	3.83	3.93	3.55	3	2.50
	19:26		Middle	3.0	20.40	20.40		8.21	8.21		31.64	31.64		93.0	92.8		6.96	6.94		3.24	3.20		2	
1/3/19	19:50	Cloudy	Middle	3.0	20.60	20.60	20.60	8.22	8.22	8.22	32.11	32.11	32.11	87.7	88.2	88.5	6.53	6.58	6.59	1.75	1.98	1.88	2	2.00
	16:51		Middle	3.0	20.60	20.60		8.22	8.22		32.11	32.11		88.8	89.2		6.61	6.64		1.97	1.80		2	
4/3/19	1:12	Cloudy	Middle	3.0	19.80	19.80	19.80	8.18	8.18	8.18	31.51	31.51	31.51	90.6	90.1	90.2	6.86	6.83	6.83	3.34	3.32	3.57	3	3.50
	1:13		Middle	3.0	19.80	19.80		8.18	8.18		31.51	31.52		90.2	90.0		6.83	6.81		3.80	3.82		4	
6/3/19	-	Amber Rainstorm Warning	Middle	-	-	-	-	-	-	-	-	-	-	-	-	-	-	-	-	-	-	-	-	-
	-		Middle	-	-	-		-	-		-	-		-	-		-	-		-	-		-	
8/3/19	13:00	Cloudy	Middle	2.5	19.30	19.30	19.30	7.05	7.05	7.06	31.55	31.55	31.55	103.1	102.5	101.5	7.88	7.84	7.77	4.38	4.38	4.38	5	5.50
	13:02		Middle	2.5	19.30	19.30		7.07	7.07		31.54	31.54		100.3	100.0		7.68	7.67		4.38	4.39		6	
11/3/19	14:30	Fine	Middle	3.5	20.30	20.30	20.35	7.20	7.20	7.21	32.76	32.76	32.76	85.2	85.7	85.6	6.34	6.38	6.37	2.66	2.62	2.63	3	3.00
	14:32		Middle	3.5	20.40	20.40		7.21	7.21		32.76	32.76		85.7	85.8		6.38	6.37		2.61	2.61		3	
13/3/19	16:45	Fine	Middle	2.5	21.40	21.40	21.50	7.38	7.38	7.39	32.93	32.93	32.93	97.2	97.7	96.8	7.07	7.10	7.03	2.56	2.58	2.61	9	9.00
	16:47		Middle	2.5	21.60	21.60		7.39	7.39		32.92	32.92		96.1	96.0		6.98	6.98		2.65	2.66		9	
15/3/19	18:45	Cloudy	Middle	3.0	19.60	19.60	19.60	8.32	8.32	8.32	32.34	32.34	32.34	85.0	86.1	85.9	6.43	6.50	6.50	3.58	3.50	3.50	<2	<2
	18:46		Middle	3.0	19.60	19.60		8.32	8.32		32.34	32.34		86.3	86.3		6.53	6.53		3.66	3.26		<2	
18/3/19	20:52	Cloudy	Middle	3.0	21.20	21.20	21.20	8.07	8.07	8.07	32.70	32.70	32.70	85.5	86.0	86.5	6.26	6.29	6.33	2.78	2.87	2.80	5	4.50
	20:53		Middle	3.0	21.20	21.20		8.07	8.07		32.70	32.70		87.0	87.4		6.37	6.40		2.81	2.75		4	
20/3/19	11:45	Cloudy	Middle	2.5	22.50	22.50	22.65	7.47	7.47	7.47	32.56	32.56	32.54	101.9	101.0	100.7	7.28	7.26	7.20	2.71	2.72	2.74	5	5.00
	11:47		Middle	2.5	22.80	22.80		7.47	7.47		32.52	32.52		100.0	100.0		7.12	7.12		2.77	2.76		5	
22/3/19	13:45	Cloudy	Middle	2.5	23.10	23.10	23.15	7.76	7.76	7.78	32.14	32.14	32.14	94.0	94.0	94.1	6.68	6.68	6.67	3.98	3.95	3.96	3	3.00
	13:47		Middle	2.5	23.20	23.20		7.80	7.80		32.14	32.14		94.2	94.0		6.66	6.67		3.95	3.94		3	
25/3/19	12:50	Fine	Middle	3.0	21.80	21.80	21.80	7.48	7.48	7.49	33.60	33.60	33.61	99.6	99.5	98.7	7.18	7.18	7.12	4.52	4.52	4.53	3	3.50
	12:52		Middle	3.0	21.80	21.80		7.49	7.49		33.62	33.62		97.6	98.0		7.04	7.08		4.54	4.53		4	

Remarks:
 Single underline denotes exceedance over Action Level.
 Double underline denotes exceedance over Limit Level.
 Due to the hoisting of Amber Rainstorm Warning Signal, the water quality monitoring event scheduled on 6 March 2019 during ebb tide was cancelled



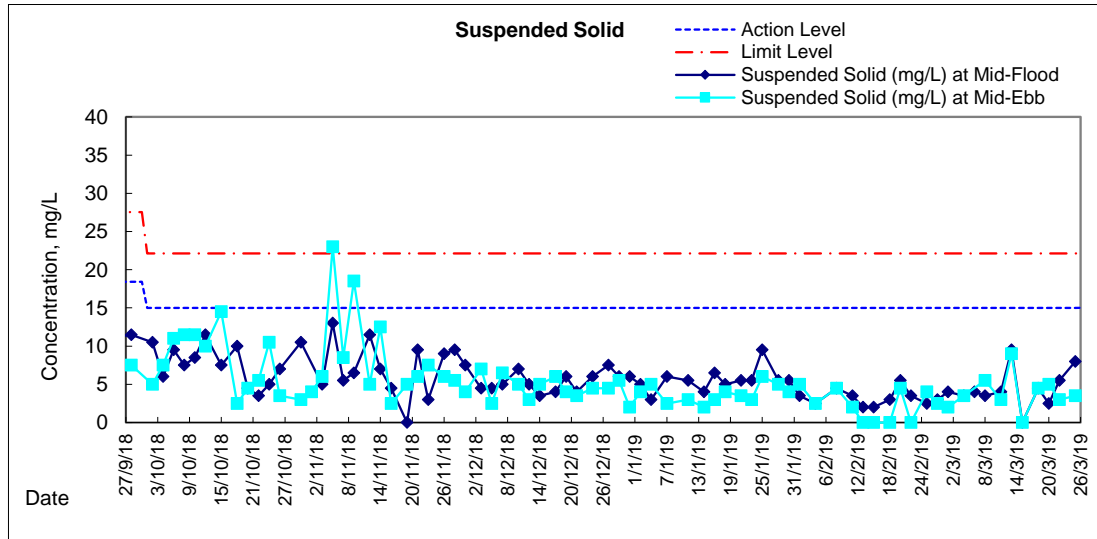
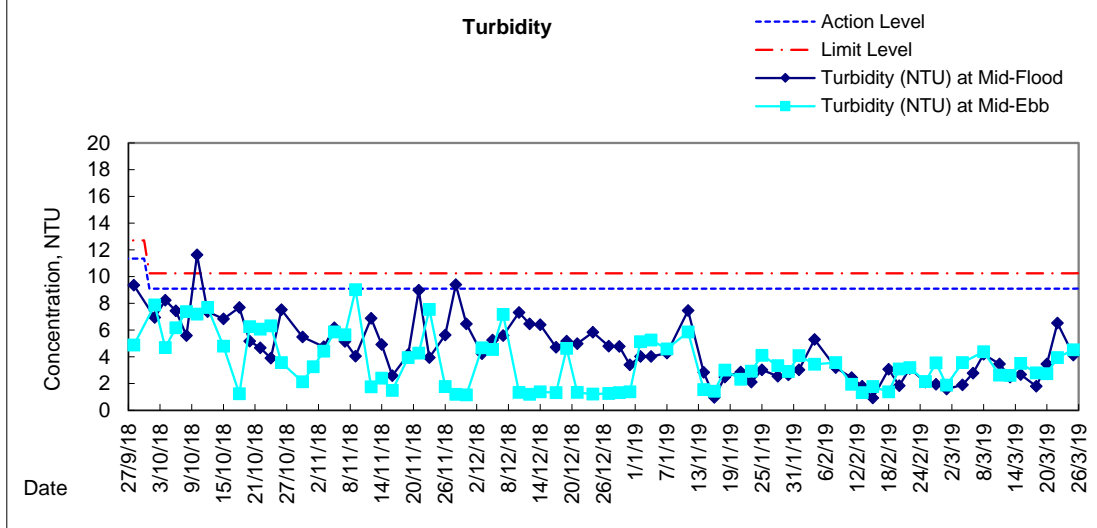
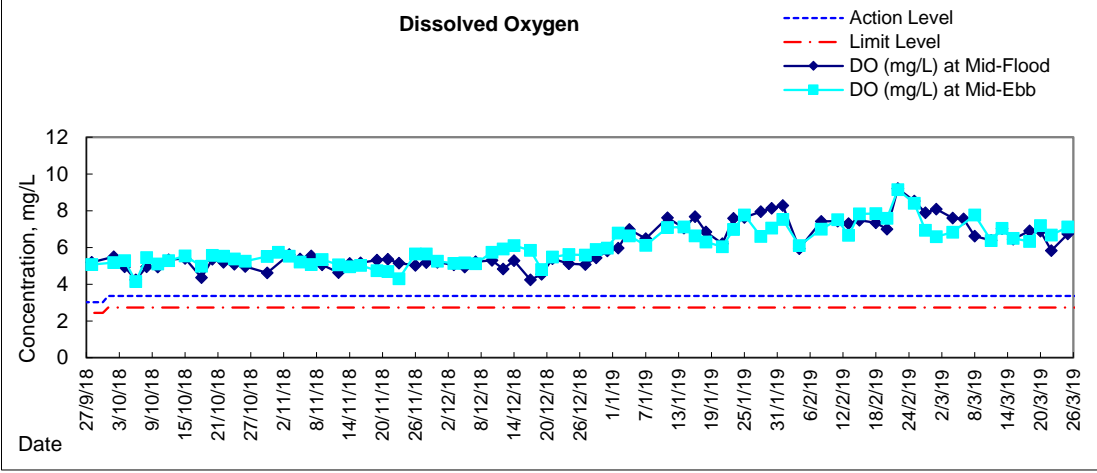
**Water Monitoring Result at RW21-P789 - GEC / CRB / SHK
Mid-Ebb Tide**

Date	Time	Weather Condition	Sampling Depth		Water Temperature		pH			Salinity			DO Saturation		DO		Turbidity		Suspended Solids					
					°C		-			ppt			%		mg/L		NTU		mg/L					
					Value	Average	Value	Average	Value	Average	Value	Average	Value	Average	Value	Average	Value	Average	Value	Average				
27/2/19	19:51	Cloudy	Middle	4.0	20.40	20.40	20.45	8.10	8.10	8.11	31.30	31.30	31.30	92.9	92.3	91.8	6.93	6.92	6.87	3.18	3.04	2.99	3	2.50
	19:52		Middle	4.0	20.50	20.50		8.11	8.11		31.30	31.30		91.3	90.7		6.84	6.79		2.92	2.81		2	
1/3/19	19:23	Cloudy	Middle	4.0	20.40	20.40	20.40	8.20	8.21	8.20	31.10	31.10	31.10	91.3	91.7	91.7	6.86	6.88	6.88	1.70	1.64	1.66	3	3.00
	19:24		Middle	4.0	20.40	20.40		8.20	8.20		31.10	31.10		92.0	91.7		6.91	6.88		1.62	1.67		3	
4/3/19	1:31	Cloudy	Middle	3.5	20.00	20.00	20.00	8.17	8.17	8.17	28.78	28.78	28.78	88.1	88.0	88.3	6.76	6.76	6.78	4.02	4.05	3.97	3	3.50
	1:32		Middle	3.5	20.00	20.00		8.17	8.17		28.78	28.78		88.3	88.7		6.78	6.81		3.93	3.88		4	
6/3/19	-	Amber Rainstorm Warning	Middle	-	-	-	-	-	-	-	-	-	-	-	-	-	-	-	-	-	-	-	-	-
	-		Middle	-	-	-		-	-		-	-		-	-		-	-		-	-		-	
8/3/19	13:45	Cloudy	Middle	3.5	19.60	19.60	19.55	7.14	7.14	7.16	32.37	32.37	32.37	89.2	89.9	89.9	6.76	6.76	6.80	1.78	1.77	1.77	<2	<2
	13:47		Middle	3.5	19.50	19.50		7.17	7.17		32.36	32.36		90.3	90.1		6.84	6.82		1.76	1.76		<2	
11/3/19	15:50	Fine	Middle	3.5	20.50	20.50	20.55	7.21	7.21	7.22	32.56	32.56	32.57	89.2	89.8	89.3	6.63	6.67	6.64	7.69	7.67	7.66	5	4.00
	15:52		Middle	3.5	20.60	20.60		7.23	7.23		32.57	32.57		89.0	89.3		6.61	6.63		7.64	7.64		3	
13/3/19	17:20	Fine	Middle	3.5	21.20	21.20	21.25	7.49	7.49	7.50	32.90	32.90	32.90	90.2	90.1	89.5	6.59	6.58	6.55	2.05	2.00	2.02	9	9.50
	17:22		Middle	3.5	21.30	21.30		7.50	7.50		32.90	32.90		89.0	88.5		6.57	6.47		2.00	2.01		10	
15/3/19	19:14	Cloudy	Middle	4.0	19.50	19.50	19.50	8.24	8.24	8.24	32.07	32.07	32.07	83.6	82.9	82.7	6.35	6.30	6.28	4.01	4.14	4.06	<2	<2
	19:15		Middle	4.0	19.50	19.50		8.24	8.24		32.07	32.07		82.3	81.8		6.26	6.22		4.06	4.04		<2	
18/3/19	23:10	Cloudy	Middle	4.0	21.20	21.20	21.20	8.11	8.10	8.10	31.34	31.34	31.34	86.6	86.3	86.6	6.38	6.36	6.38	3.16	3.12	3.10	4	4.00
	23:11		Middle	4.0	21.20	21.20		8.10	8.10		31.34	31.34		86.8	86.6		6.39	6.38		3.09	3.04		4	
20/3/19	13:30	Cloudy	Middle	3.5	22.00	22.00	22.05	7.64	7.64	7.67	33.04	33.04	33.04	82.3	82.8	82.4	5.93	5.96	5.93	1.79	1.79	1.80	3	3.00
	13:32		Middle	3.5	22.10	22.10		7.69	7.69		33.04	33.04		82.1	82.4		5.91	5.93		1.82	1.80		3	
22/3/19	12:30	Cloudy	Middle	3.5	22.20	22.20	22.25	7.81	7.81	7.82	32.41	32.41	32.41	87.4	87.7	88.0	6.30	6.32	6.34	5.15	5.10	5.13	5	4.50
	12:32		Middle	3.5	22.30	22.30		7.82	7.82		32.41	32.41		88.6	88.1		6.38	6.34		5.12	5.13		4	
25/3/19	13:15	Fine	Middle	4.0	21.60	21.60	21.65	7.53	7.53	7.55	33.69	33.69	33.69	96.1	96.6	95.2	6.94	6.91	6.87	4.88	4.88	4.87	6	6.50
	13:17		Middle	4.0	21.70	21.70		7.56	7.56		33.68	33.68		94.1	94.1		6.80	6.81		4.87	4.86		7	

Remarks:
 Single underline denotes exceedance over Action Level.
 Double underline denotes exceedance over Limit Level.
 Due to the hoisting of Amber Rainstorm Warning Signal, the water quality monitoring event scheduled on 6 March 2019 during ebb tide was cancelled



Graphic Presentation of Water Quality Result of C1 - HKCEC





Graphic Presentation of Water Quality Result of RW21-P789 - GEC/CRC/SHK

